

## FEATURES

- Investment Cast Body Construction
- Y-Type Design
- Screwed Bonnet
- Standard in 1mm Perforated Screen for 1/2" ~ 3"  
Standard in 3mm Perforated Screen for 4" ~ 12"
- Other sizes Perforated Screens and Woven Mesh Screens are available upon request
- For General Chemical and Industrial application

## SPECIFICATIONS

- Size Range 1/2" ~ 20" ( DN15 ~ DN500 )
- End Connection Flanged End, RF
- Working Pressure CF8M - 275 PSI ( CWP )  
WCB - 285 PSI ( CWP )
- Temperature Range -4 to 320 °F ( -20 to 160 °C ) for PTFE.

## STANDARDS

- Design ASME/ANSI B16.34
- Face to Face MFG Standard
- Flange Dimension ASME/ANSI B16.5 Class 150 RF
- Material ASTM
- Pressure Testing API 598

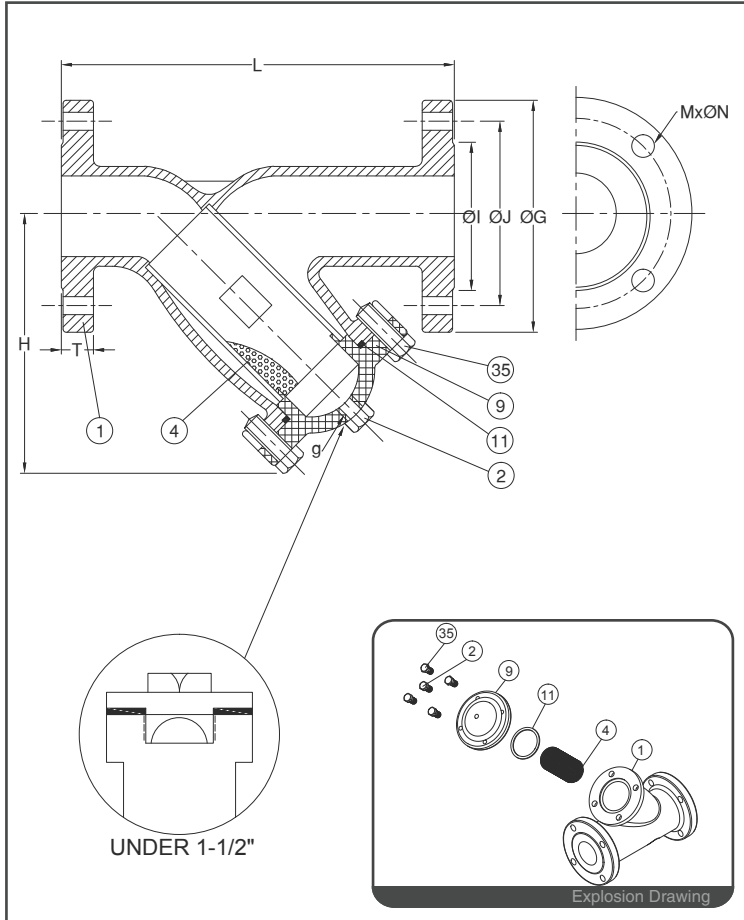
## CERTIFICATE

- Quality Assurance ISO 9001
- Material Certificate EN 10204-3.1 MTR
- CE Approval PED 97/23/EC Module H
- Canadian Certificate CRN

| MATERIAL LIST |                   |  | DIMENSION |        |     |     |     |       |     |      |    |        |      |
|---------------|-------------------|--|-----------|--------|-----|-----|-----|-------|-----|------|----|--------|------|
| NO.           | PART NAME         | MATERIAL<br>( more options available ) | unit : mm |        |     |     |     |       |     |      |    |        |      |
|               |                   |  | SIZE      | L      | H   | ØG  | ØJ  | ØI    | T   | M    | ØN | g(NPT) |      |
| 1             | BODY              | ASTM A351 Gr.CF8M                      | DN15      | 1/2"   | 152 | 70  | 89  | 60.5  | 35  | 11.2 | 4  | 15     |      |
| 2             | PLUG              | ASTM A351 Gr.CF8M                      | DN20      | 3/4"   | 189 | 78  | 99  | 70.0  | 43  | 11.2 | 4  | 15     |      |
| 4             | PERFORATED SCREEN | SS304                                  | DN25      | 1"     | 189 | 92  | 108 | 79.0  | 51  | 11.2 | 4  | 15     |      |
| 9             | BONNET            | ASTM A351 Gr.CF8M                      | DN40      | 1-1/2" | 180 | 109 | 127 | 98.5  | 73  | 14.3 | 4  | 15     |      |
| 11            | GASKET            | PTFE.                                  | DN50      | 2"     | 218 | 146 | 152 | 120.5 | 92  | 15.9 | 4  | 19     | 1/2" |
| 35            | BODY BOLT         | ASTM A193 Gr.B8                        | DN65      | 2-1/2" | 261 | 180 | 178 | 139.5 | 105 | 17.5 | 4  | 19     | 3/4" |

| DIMENSION   |        |       |      |      |      |      |      |    |        |      |
|-------------|--------|-------|------|------|------|------|------|----|--------|------|
| unit : inch |        |       |      |      |      |      |      |    |        |      |
| SIZE        | L      | H     | ØG   | ØJ   | ØI   | T    | M    | ØN | g(NPT) |      |
| DN15        | 1/2"   | 5.98  | 2.75 | 3.50 | 2.38 | 1.37 | 0.44 | 4  | 0.59   |      |
| DN20        | 3/4"   | 7.44  | 3.07 | 3.89 | 2.75 | 1.69 | 0.44 | 4  | 0.59   |      |
| DN25        | 1"     | 7.44  | 3.62 | 4.25 | 3.11 | 2.00 | 0.44 | 4  | 0.59   |      |
| DN40        | 1-1/2" | 7.08  | 4.29 | 5.00 | 3.87 | 2.87 | 0.56 | 4  | 0.59   |      |
| DN50        | 2"     | 8.58  | 5.74 | 5.98 | 4.74 | 3.62 | 0.62 | 4  | 0.74   | 1/2" |
| DN65        | 2-1/2" | 10.27 | 7.08 | 7.00 | 5.49 | 4.13 | 0.68 | 4  | 0.74   | 3/4" |



## FEATURES

- Investment Cast Body Construction
- Y-Type Design
- Screwed Bonnet
- Standard in 1mm Perforated Screen for 1/2" ~ 3"  
Standard in 3mm Perforated Screen for 4" ~ 12"
- Other sizes Perforated Screens and Woven Mesh Screens are available upon request
- For General Chemical and Industrial application

## SPECIFICATIONS

- Size Range 1/2" ~ 20" ( DN15 ~ DN500 )
- End Connection Flanged End, RF
- Working Pressure CF8M - 275 PSI ( CWP )  
WCB - 285 PSI ( CWP )
- Temperature Range -4 to 320 °F ( -20 to 160 °C ) for PTFE.

## STANDARDS

- Design ASME/ANSI B16.34
- Face to Face MFG Standard
- Flange Dimension ASME/ANSI B16.5 Class 150 RF
- Material ASTM
- Pressure Testing API 598

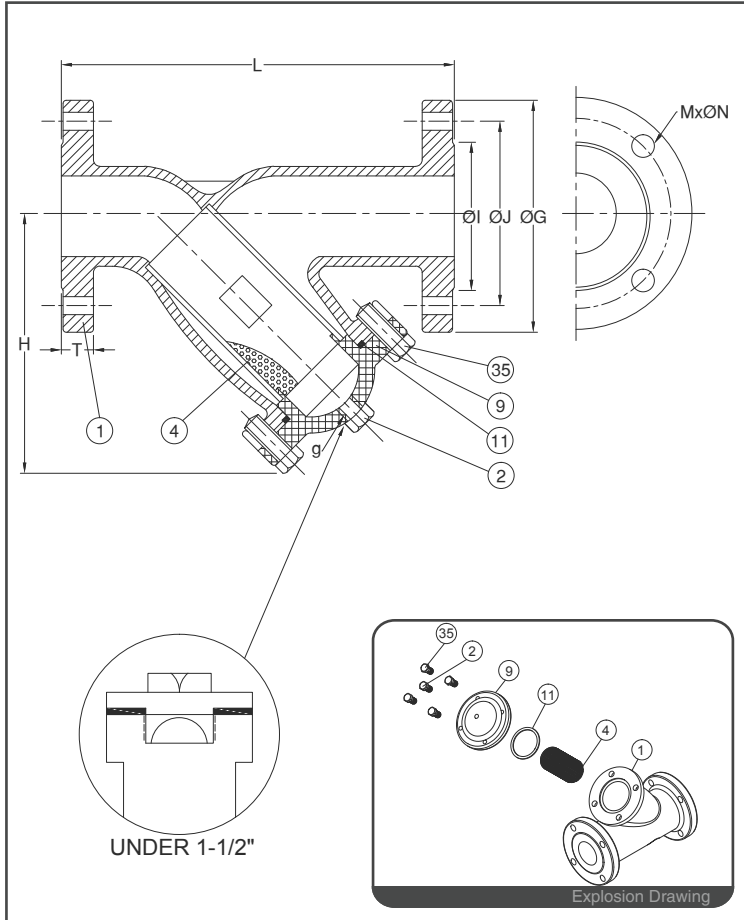
## CERTIFICATE

- Quality Assurance ISO 9001
- Material Certificate EN 10204-3.1 MTR
- CE Approval PED 97/23/EC Module H
- Canadian Certificate CRN

| MATERIAL LIST |                   |  | DIMENSION |      |                   |      |     |       |     |      |       | unit : mm |        |
|---------------|-------------------|--|-----------|------|-------------------|------|-----|-------|-----|------|-------|-----------|--------|
| NO.           | PART NAME         | MATERIAL<br>( more options available ) | SIZE      |      | L                 | H    | ØG  | ØJ    | ØI  | T    | M     | ØN        | g(NPT) |
|               |                   |  | 1         | BODY | ASTM A351 Gr.CF8M | DN80 | 3"  | 295   | 200 | 190  | 152.5 | 127       | 19.1   |
| 2             | PLUG              | ASTM A351 Gr.CF8M                      | DN100     | 4"   | 361               | 240  | 229 | 190.5 | 157 | 23.9 | 8     | 19        | 1-1/2" |
| 4             | PERFORATED SCREEN | SS304                                  | DN125     | 5"   | 470               | 300  | 254 | 216.0 | 186 | 24.0 | 8     | 22        | 2"     |
| 9             | BONNET            | ASTM A351 Gr.CF8M                      | DN150     | 6"   | 469               | 340  | 279 | 241.5 | 216 | 25.4 | 8     | 22        | 2"     |
| 11            | GASKET            | PTFE.                                  | DN200     | 8"   | 633               | 460  | 343 | 298.5 | 270 | 28.6 | 8     | 22        | 2"     |
| 35            | BODY BOLT         | ASTM A193 Gr.B8                        | DN250     | 10"  | 663               | 495  | 406 | 362.0 | 324 | 30.2 | 12    | 25        | 2"     |

|  |  |  | DIMENSION |     |       |       |       |       |       |      |      | unit : inch |        |
|--|--|--|-----------|-----|-------|-------|-------|-------|-------|------|------|-------------|--------|
|  |  |  | SIZE      |     | L     | H     | ØG    | ØJ    | ØI    | T    | M    | ØN          | g(NPT) |
|  |  |  |           |     |       | DN80  | 3"    | 11.61 | 7.87  | 7.48 | 6.00 | 5.00        | 0.75   |
|  |  |  | DN100     | 4"  | 14.21 | 9.44  | 9.01  | 7.50  | 6.18  | 0.94 | 8    | 0.74        | 1-1/2" |
|  |  |  | DN125     | 5"  | 18.50 | 11.81 | 10.00 | 8.50  | 7.32  | 0.94 | 8    | 0.86        | 2"     |
|  |  |  | DN150     | 6"  | 18.46 | 13.38 | 10.98 | 9.50  | 8.50  | 1.00 | 8    | 0.86        | 2"     |
|  |  |  | DN200     | 8"  | 24.92 | 18.11 | 13.50 | 11.75 | 10.62 | 1.12 | 8    | 0.86        | 2"     |
|  |  |  | DN250     | 10" | 26.10 | 19.48 | 15.98 | 14.25 | 12.75 | 1.18 | 12   | 0.98        | 2"     |



## FEATURES

- Investment Cast Body Construction
- Y-Type Design
- Screwed Bonnet
- Standard in 1mm Perforated Screen for 1/2" ~ 3"  
Standard in 3mm Perforated Screen for 4" ~ 12"
- Other sizes Perforated Screens and Woven Mesh Screens are available upon request
- For General Chemical and Industrial application

## SPECIFICATIONS

- Size Range 1/2" ~ 20" ( DN15 ~ DN500 )
- End Connection Flanged End, RF
- Working Pressure CF8M - 275 PSI ( CWP )  
WCB - 285 PSI ( CWP )
- Temperature Range -4 to 320 °F ( -20 to 160 °C ) for PTFE.

## STANDARDS

- Design ASME/ANSI B16.34
- Face to Face MFG Standard
- Flange Dimension ASME/ANSI B16.5 Class 150 RF
- Material ASTM
- Pressure Testing API 598

## CERTIFICATE

- Quality Assurance ISO 9001
- Material Certificate EN 10204-3.1 MTR
- CE Approval PED 97/23/EC Module H
- Canadian Certificate CRN

## MATERIAL LIST

| NO. | PART NAME         | MATERIAL<br>( more options available ) |
|-----|-------------------|--|
| 1   | BODY              | ASTM A351 Gr.CF8M                      |
| 2   | PLUG              | ASTM A351 Gr.CF8M                      |
| 4   | PERFORATED SCREEN | SS304                                  |
| 9   | BONNET            | ASTM A351 Gr.CF8M                      |
| 11  | GASKET            | PTFE.                                  |
| 35  | BODY BOLT         | ASTM A193 Gr.B8                        |

## DIMENSION

| SIZE  |     | L    | H   | ØG  | ØJ  | ØI  | T    | M  | ØN | g(NPT) |
|-------|-----|------|-----|-----|-----|-----|------|----|----|--------|
| DN300 | 12" | 772  | 575 | 483 | 432 | 381 | 31.8 | 12 | 25 | 2"     |
| DN350 | 14" | 950  | 736 | 535 | 476 | 413 | 35.0 | 12 | 29 | 2"     |
| DN400 | 16" | 1050 | 736 | 595 | 540 | 470 | 37.0 | 16 | 29 | 2"     |
| DN450 | 18" | 1150 | 885 | 635 | 578 | 533 | 39.7 | 16 | 32 | 2"     |
| DN500 | 20" | 1250 | 960 | 698 | 635 | 584 | 43.0 | 20 | 32 | 2"     |

## DIMENSION

| SIZE  |        | L     | H     | ØG    | ØJ    | ØI    | T    | M  | ØN   | g(NPT) |
|-------|--------|-------|-------|-------|-------|-------|------|----|------|--------|
| DN65  | 2-1/2" | 30.39 | 22.63 | 19.01 | 17.00 | 15.00 | 1.25 | 12 | 0.98 | 2"     |
| DN80  | 3"     | 37.40 | 28.97 | 21.06 | 18.74 | 16.25 | 1.37 | 12 | 1.14 | 2"     |
| DN100 | 4"     | 41.33 | 28.97 | 23.42 | 21.25 | 18.50 | 1.45 | 16 | 1.14 | 2"     |
| DN125 | 5"     | 45.27 | 38.84 | 25.00 | 22.75 | 20.98 | 1.56 | 16 | 1.25 | 2"     |
| DN150 | 6"     | 49.21 | 37.79 | 27.48 | 25.00 | 22.99 | 1.69 | 20 | 1.25 | 2"     |