

### FEATURES

- Investment Cast Body Construction
- Valve Design as per API 603 & BS1868
- Swing Type & Bolted Bonnet Design
- Full enclosed Gasket
- Disc assembly - All parts are accessible from top
- 2" and larger integral Stellite seat face available for longer service life **OPTION**
- NACE MR0175 is available upon request
- Super Alloy materials for highly corrosive medium are available upon request

### SPECIFICATIONS

- Size Range 1/2" ~ 24" ( DN15 ~ DN600 )
- End Connection Flanged End, RF
- Working Pressure CF8M - 275 PSI ( CWP )  
WCB - 285 PSI ( CWP )

### STANDARDS

- Design ASME/ANSI B16.34 / API 603 / BS1868
- Face to Face ASME/ANSI B16.10 Class 150
- Flange Dimension ASME/ANSI B16.5 Class 150 RF
- Material ASTM
- Pressure Testing API 598

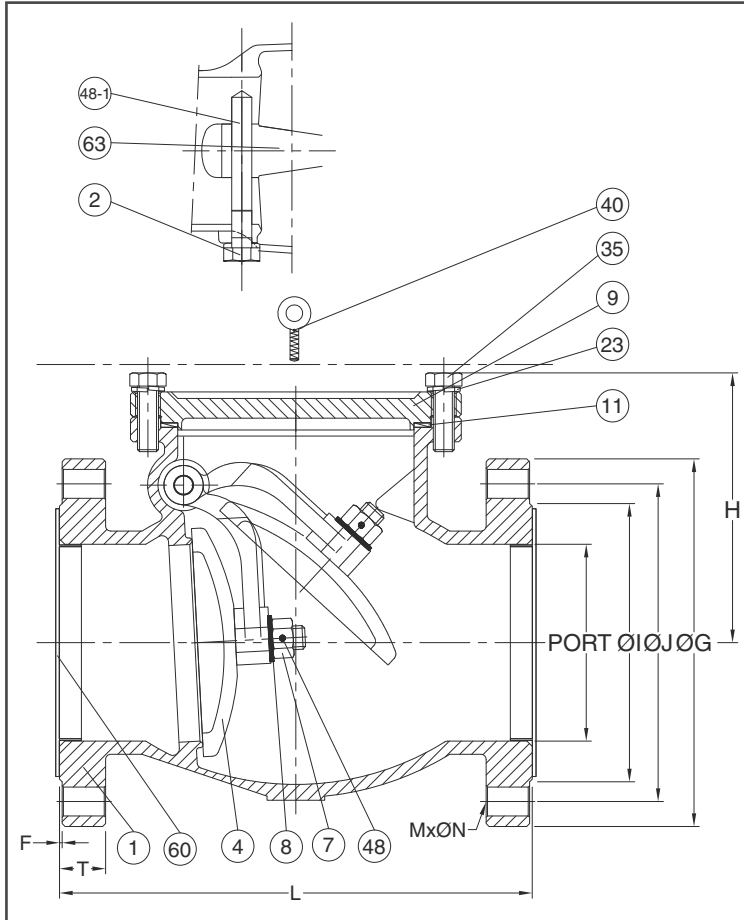
### CERTIFICATE

- Quality Assurance ISO 9001
- Material Certificate EN 10204-3.1 MTR
- CE Approval PED 97/23/EC Module H
- Canadian Certificate CRN

MATERIAL LIST			Trim#8	DIMENSION								unit : mm		
NO.	PART NAME	MATERIAL (more options available)		SIZE	PORT	L	H	ØG	ØJ	ØI	T	F	M x ØN	
1	BODY	ASTM A351 Gr.CF8M		DN15	1/2"	15.0	108.0	57.0	89.0	60.3	35.0	9.5	1.6	4 x Ø16.0
2	PLUG	SS316		DN20	3/4"	20.0	117.0	58.0	98.0	69.8	43.0	10.0	1.6	4 x Ø16.0
4	DISC	ASTM A351 Gr.CF8M		DN25	1"	25.0	127.0	68.0	108.0	79.4	51.0	11.1	1.6	4 x Ø16.0
7	DISC NUT	SS316		DN40	1-1/2"	40.0	165.0	80.0	127.0	98.4	73.0	14.2	1.6	4 x Ø16.0
8	DISC WASHER	SS304		DN50	2"	50.0	203.0	102.0	152.0	120.6	92.0	15.8	1.6	4 x Ø19.0
9	BONNET	ASTM A351 Gr.CF8M		DN65	2-1/2"	65.0	216.0	120.0	178.0	139.7	105.0	17.5	1.6	4 x Ø19.0
11	GASKET	GRAPHITE												
35	BODY BOLT (STUD)	ASTM A193 Gr.B8												
36	BOLT WASHER	SS304												
40	EYE BOLT	SS304												
48	DISC NUT PIN	SS316												
48-1	DISC PIN	SS316												
60	COVER	PE												
63	HINGE (ARM)	ASTM A351 Gr.CF8M												

DIMENSION												unit : inch
SIZE	PORT	L	H	ØG	ØJ	ØI	T	F	M x ØN			
DN15	1/2"	0.59	4.25	2.24	3.50	2.37	1.38	0.37	0.06	4 x Ø0.63		
DN20	3/4"	0.79	4.61	2.28	3.86	2.75	1.69	0.39	0.06	4 x Ø0.63		
DN25	1"	0.98	5.00	2.68	4.25	3.13	2.01	0.44	0.06	4 x Ø0.63		
DN40	1-1/2"	1.57	6.50	3.15	5.00	3.87	2.87	0.56	0.06	4 x Ø0.63		
DN50	2"	1.97	7.99	4.02	5.98	4.75	3.62	0.62	0.06	4 x Ø0.75		
DN65	2-1/2"	2.56	8.50	4.72	7.01	5.50	4.13	0.69	0.06	4 x Ø0.75		



#### FEATURES

- Investment Cast Body Construction
- Valve Design as per API 603 & BS1868
- Swing Type & Bolted Bonnet Design
- Full enclosed Gasket
- Disc assembly - All parts are accessible from top
- 2" and larger integral Stellite seat face available for longer service life **OPTION**
- NACE MR0175 is available upon request
- Super Alloy materials for highly corrosive medium are available upon request

#### SPECIFICATIONS

- Size Range 1/2" ~ 24" ( DN15 ~ DN600 )
- End Connection Flanged End, RF
- Working Pressure CF8M - 275 PSI ( CWP )  
WCB - 285 PSI ( CWP )

#### STANDARDS

- Design ASME/ANSI B16.34 / API 603 / BS1868
- Face to Face ASME/ANSI B16.10 Class 150
- Flange Dimension ASME/ANSI B16.5 Class 150 RF
- Material ASTM
- Pressure Testing API 598

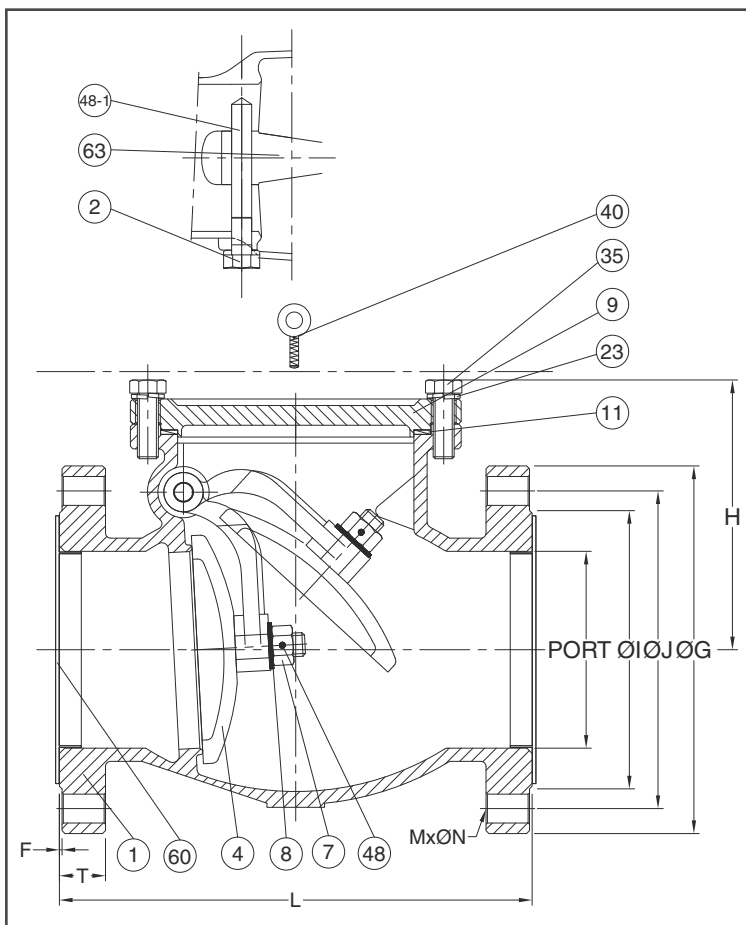
#### CERTIFICATE

- Quality Assurance ISO 9001
- Material Certificate EN 10204-3.1 MTR
- CE Approval PED 97/23/EC Module H
- Canadian Certificate CRN

MATERIAL LIST			Trim#8	DIMENSION								unit : mm		
NO.	PART NAME	MATERIAL ( more options available )		SIZE	PORT	L	H	ØG	ØJ	ØI	T	F	M x ØN	
1	BODY	ASTM A216 Gr.WCB		DN80	3"	80.0	241.0	125.0	190.0	152.4	127.0	19.1	1.6	4 x Ø19.0
2	PLUG	ASTM A276 TYPE 410		DN100	4"	100.0	292.0	168.0	229.0	190.5	157.0	23.9	1.6	8 x Ø19.0
3	PLUG SEAL	ASTM A276 TYPE 304		DN125	5"	125.0	330.0	178.0	254.0	215.9	186.0	23.9	1.6	8 x Ø22.2
4	DISC	ASTM A216 Gr.WCB + 13Cr.		DN150	6"	150.0	356.0	200.0	279.0	241.3	216.0	25.4	1.6	8 x Ø22.2
7	DISC NUT	ASTM A276 TYPE 410		DN200	8"	200.0	495.0	235.0	343.0	298.4	270.0	28.5	1.6	8 x Ø22.2
8	DISC WASHER	ASTM A276 TYPE 410		DN250	10"	250.0	622.0	350.0	406.0	361.9	324.0	30.2	1.6	12 x Ø25.4
9	BONNET	ASTM A216 Gr.WCB												
11	GASKET	SS304 + GRAPHITE ( SPW )												
12	SEAT RING	ASTM A105 + STELLITE#6												
20	RIVET	SS304												
25	NAME PLATE	SS304												
35	BODY BOLT (STUD)	ASTM A193 Gr.B7												
37	STUD BOLT NUT	ASTM A194 Gr.2H												
40	EYE BOLT	CARBON STEEL												
48	DISC NUT PIN	ASTM A276 TYPE 410												
48-1	DISC PIN	ASTM A182 Gr.F6A												
63	HINGE	ASTM A216 Gr.WCB												

DIMENSION												unit : inch
SIZE	PORT	L	H	ØG	ØJ	ØI	T	F	M x ØN			
DN80	3"	3.15	9.49	4.92	7.48	6.00	5.00	0.75	0.06	4 x Ø0.75		
DN100	4"	3.94	11.50	6.61	9.02	7.50	6.18	0.94	0.06	8 x Ø0.75		
DN125	5"	4.92	12.99	7.01	10.00	8.50	7.32	0.94	0.06	8 x Ø0.87		
DN150	6"	5.91	14.02	7.87	10.98	9.50	8.50	1.00	0.06	8 x Ø0.87		
DN200	8"	7.87	19.49	9.25	13.50	11.75	10.63	1.12	0.06	8 x Ø0.87		
DN250	10"	9.84	24.49	13.78	15.98	14.25	12.76	1.19	0.06	12 x Ø1.00		



**FEATURES**

- Investment Cast Body Construction
- Valve Design as per API 603 & BS1868
- Swing Type & Bolted Bonnet Design
- Full enclosed Gasket
- Disc assembly - All parts are accessible from top
- 2" and larger integral Stellite seat face available for longer service life **OPTION**
- NACE MR0175 is available upon request
- Super Alloy materials for highly corrosive medium are available upon request

**SPECIFICATIONS**

- Size Range 1/2" ~ 24" ( DN15 ~ DN600 )
- End Connection Flanged End, RF
- Working Pressure CF8M - 275 PSI ( CWP )  
WCB - 285 PSI ( CWP )

**STANDARDS**

- Design ASME/ANSI B16.34 / API 603 / BS1868
- Face to Face ASME/ANSI B16.10 Class 150
- Flange Dimension ASME/ANSI B16.5 Class 150 RF
- Material ASTM
- Pressure Testing API 598

**CERTIFICATE**

- Quality Assurance ISO 9001
- Material Certificate EN 10204-3.1 MTR
- CE Approval PED 97/23/EC Module H
- Canadian Certificate CRN

**MATERIAL LIST** Trim#8

NO.	PART NAME	MATERIAL ( more options available )
1	BODY	ASTM A216 Gr.WCB
2	PLUG	ASTM A276 TYPE 410
3	PLUG SEAL	ASTM A276 TYPE 304
4	DISC	ASTM A216 Gr.WCB + 13Cr.
7	DISC NUT	ASTM A276 TYPE 410
8	DISC WASHER	ASTM A276 TYPE 410
9	BONNET	ASTM A216 Gr.WCB
11	GASKET	SS304 + GRAPHITE ( SPW )
12	SEAT RING	ASTM A105 + STELLITE#6
20	RIVET	SS304
25	NAME PLATE	SS304
35	BODY BOLT (STUD)	ASTM A193 Gr.B7
37	STUD BOLT NUT	ASTM A194 Gr.2H
40	EYE BOLT	CARBON STEEL
48	DISC NUT PIN	ASTM A276 TYPE 410
48-1	DISC PIN	ASTM A182 Gr.F6A
63	HINGE	ASTM A216 Gr.WCB

**DIMENSION** unit : mm

SIZE	PORT	L	H	ØG	ØJ	ØI	T	F	M x ØN	
DN300	12"	300.0	699.0	380.0	483.0	431.8	381.0	31.8	1.6	12 x Ø25.4
DN350	14"	350.0	787.0	430.0	533.0	476.2	413.0	35.1	1.6	12 x Ø29.0
DN400	16"	400.0	864.0	450.0	597.0	539.7	470.0	36.6	1.6	16 x Ø29.0
DN450	18"	450.0	978.0	650.0	635.0	577.8	533.0	39.6	1.6	16 x Ø32.0
DN500	20"	500.0	978.0	650.0	698.0	635.0	584.0	42.9	1.6	20 x Ø32.0
DN550	22"	550.0	985.0	650.0	750.0	692.0	641.0	46.0	1.6	20 x Ø35.0
DN600	24"	600.0	1295.0	900.0	813.0	749.3	692.1	47.8	1.6	20 x Ø35.0

**DIMENSION** unit : inch

SIZE	PORT	L	H	ØG	ØJ	ØI	T	F	M x ØN	
DN300	12"	11.81	27.52	14.96	19.02	17.00	15.00	1.25	0.06	12 x Ø1.00
DN350	14"	13.78	30.98	16.93	20.98	18.75	16.97	1.38	0.06	12 x Ø1.14
DN400	16"	15.75	34.02	17.72	23.50	21.25	18.50	1.44	0.06	16 x Ø1.14
DN450	18"	17.72	38.50	25.59	25.00	22.75	20.98	1.56	0.06	16 x Ø1.26
DN500	20"	19.69	38.50	25.59	27.48	25.00	22.99	1.69	0.06	20 x Ø1.26
DN550	22"	21.65	38.78	25.59	29.53	27.24	25.24	1.81	0.06	20 x Ø1.38
DN600	24"	23.62	50.98	35.43	32.01	29.50	27.25	1.88	0.06	20 x Ø1.38