

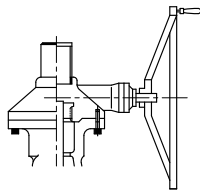
Fig No:GTF-JIS 10K 1/2"~24"
DN15~DN600

Features:

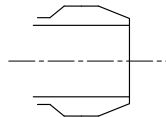
- Flexible wedge
- Outside Screw and Yoke, Rising stem design, Non-rising hand wheel
- 8" & larger with Ball bearing for easy operation
- For General Chemical and Industrial application
- 2" and larger integral Stellite seat face available for longer service life (option)
- Seat face stellite, ground and lapped to a mirror finish

Specifications:

- Valve design according to API 603
- Shell Well Thickness According to ANSI B16.34
- Face to Face According to JIS B2002(1987)
- Flanged Dimension According to JIS B2010(1996)
- Pressure testing according to API598



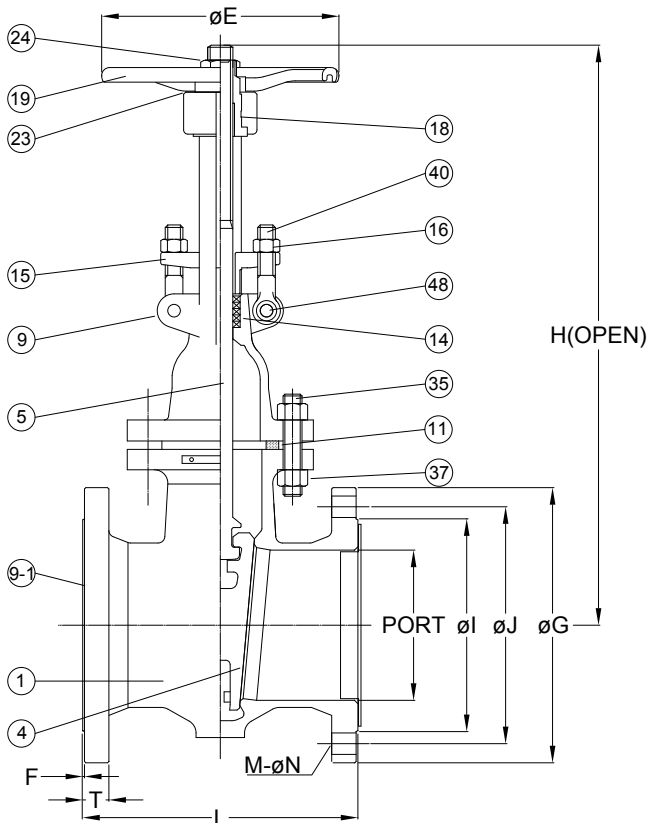
Available With Gear Operator



Buttwelding Ends

MATERIALS LIST

NO.	SUBJECT	MATERIAL
1	BODY	SCS14
4	DISC	SCS14
5	STEM	SUS316
9	BONNET	SCS14
9-1	COVER	PE
11	GASKET	V#1500/GRAPHITE/PTFE.
14	PACKING	PTFE./GRAPHITE
15	GLAND	SCS14
16	EYE BOLT NUT	A194-8
18	YOKESLEEVE	BRONZE
19	HAND WHEEL	DUCTILE IRON
23	WASHER	SUS304
24	WHEEL NUT	STEEL
35	BONNET BOLT	A193-B8
37	BONNET NUT	A194-8
40	EYE BOLT	A193-B8
48	BOLT PIN	A276-304



DIMENSIONS

unit:mm

DN	NPS	PORT	L	ϕE	H(OPEN)	ϕG	ϕJ	ϕI	T	F	M- ϕN
DN15	1/2"	15.0	108.0	100.0	205.0	95.0	70.0	52.0	12.0	1.0	4- $\phi 15.0$
DN20	3/4"	20.0	117.0	100.0	209.0	100.0	75.0	58.0	14.0	1.0	4- $\phi 15.0$
DN25	1"	25.0	127.0	120.0	225.0	125.0	90.0	70.0	14.0	1.0	4- $\phi 19.0$
DN40	1-1/2"	40.0	165.0	170.0	288.0	140.0	105.0	85.0	16.0	2.0	4- $\phi 19.0$
DN50	2"	50.0	178.0	170.0	340.0	155.0	120.0	100.0	16.0	2.0	4- $\phi 19.0$
DN65	2-1/2"	65.0	190.0	170.0	398.0	175.0	140.0	120.0	18.0	2.0	4- $\phi 19.0$
DN80	3"	80.0	203.0	189.0	490.0	185.0	150.0	130.0	18.0	2.0	8- $\phi 19.0$
DN100	4"	100.0	229.0	222.0	577.0	210.0	175.0	155.0	18.0	2.0	8- $\phi 19.0$
DN125	5"	125.0	254.0	290.0	695.0	250.0	210.0	185.0	20.0	2.0	8- $\phi 23.0$
DN150	6"	150.0	267.0	290.0	770.0	280.0	240.0	215.0	22.0	2.0	8- $\phi 23.0$
DN200	8"	200.0	292.0	350.0	990.0	330.0	290.0	265.0	22.0	2.0	12- $\phi 23.0$
DN250	10"	250.0	330.0	400.0	1115.0	400.0	355.0	325.0	24.0	2.0	12- $\phi 25.0$
DN300	12"	300.0	356.0	400.0	1385.0	445.0	400.0	370.0	24.0	3.0	16- $\phi 25.0$
DN350	14"	350.0	381.0	500.0	1600.0	490.0	445.0	415.0	26.0	3.0	16- $\phi 25.0$
DN400	16"	400.0	406.0	500.0	1700.0	560.0	510.0	475.0	28.0	3.0	16- $\phi 27.0$
DN450	18"	450.0	432.0	500.0	1800.0	620.0	565.0	530.0	30.0	3.0	16- $\phi 27.0$
DN500	20"	500.0	457.0	600.0	1900.0	675.0	620.0	585.0	30.0	3.0	20- $\phi 27.0$
DN600	24"	600.0	508.0	600.0	2100.0	795.0	730.0	690.0	32.0	3.0	24- $\phi 33.0$