



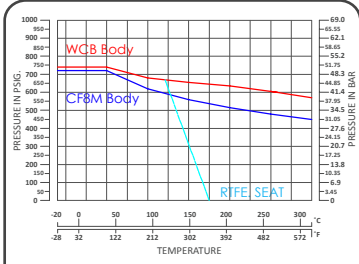
MD-32

Two Pieces Flanged Ball Valve

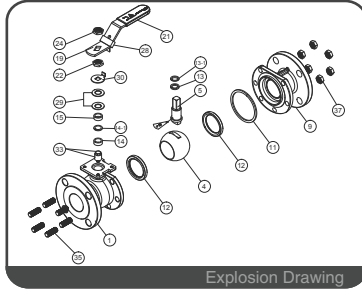
API 607 6th Edition / ISO 10497 Certified

ANSI Class 300 / Full Bore

Flanged End / 1/2" ~ 6"



ANSI Class 300 P-T Chart



Explosion Drawing

FEATURES

- Investment Cast Body Construction
- 2 Pieces Body Design
- ISO 5211 Mounting Flange
- Blow-Out-Proof Stem Design
- Anti-Static Device
- Available for Pneumatic or Electric Actuator
- NACE MR0175 is available upon request
- Super Alloy materials for highly corrosive medium are available upon request

AUTOMATION AVAILABLE

SPECIFICATIONS

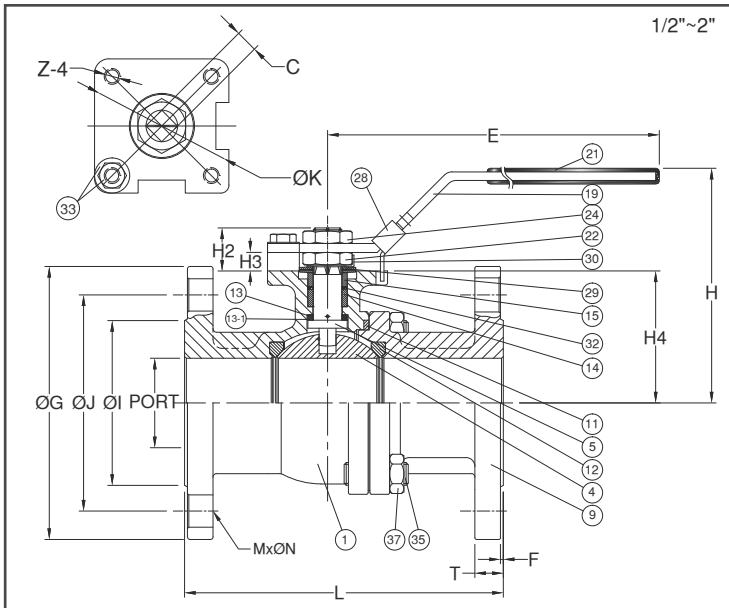
- Size Range: 1/2" ~ 6" (DN15 ~ DN150)
- End Connection: Flanged End, RF
- Working Pressure: CF8M - 720 PSI (CWP)
WCB - 740 PSI (CWP)
- Steam Pressure: 150 PSIG. Saturated Steam for RTFE.
- Temperature Range: -4 to 356 °F (-20 to 180 °C) for RTFE.

STANDARDS

- Design: ASME/ANSI B16.34 / API 608
- Mounting Flange: ISO 5211
- Face to Face: ASME/ANSI B16.10 Class 300
- Flange Dimension: ASME/ANSI B16.5 Class 300 RF
- Material: ASTM
- Pressure Testing: API 598

CERTIFICATE

- Fire Safe: API 607 6th Edition / ISO 10497
- Fugitive Emission: TA-LUFT
- Quality Assurance: ISO 9001
- Material Certificate: EN 10204-3.1 MTR
- CE Approval: PED 97/23/EC Module H
- Canadian Certificate: CRN



MATERIAL LIST

NO.	PART NAME	MATERIAL (more options available)	
1	BODY	ASTM A351 Gr.CF8M	ASTM A216 Gr.WCB
4	BALL	ASTM A351 Gr.CF8M	
5	STEM	ASTM A276 Gr.SS316	
9	END CAP	ASTM A351 Gr.CF8M	ASTM A216 Gr.WCB
11	BODY SEAL	GRAPHITE	
12	SEAT	RTFE.(15%G.F.)	
13	THRUST WASHER	GRAPHITE	
13-1	THRUST WASHER	RTFE.(15%G.F.)	
14	STEM PACKING	GRAPHITE	
15	GLAND BUSH	SS304	
19	HANDLE	STEEL	
21	HANDLE COVER	PLASTIC	
22	STEM NUT	SS304	
24	HANDLE NUT	SS304	
28	LOCKING DEVICE	SS304	
29	BELLEVILLE WASHER	SS301	
30	TAB WASHER	SS304	
32	PACKING FOLLOWER	RTFE.(15%G.F.)	
33	STOP PIN SET	SS304	
35	BODY BOLT	ASTM A193 Gr.B8	ASTM A193 Gr.B7
37	BOLT NUT	ASTM A194 Gr.8	ASTM A193 Gr.2H

DIMENSION

SIZE	PORT	unit : mm																
		L	E	H	H2	H3	H4	C	ØG	ØJ	ØI	T	F	MxØN	ØK	Z		
DN15	1/2"	15.0	140.0	132	80.0	16.0	8.0	38.5	9	95.0	66.6	35.1	12.7	2.0	4xØ16	42/F04	M5x0.8P	
DN20	3/4"	20.0	152.5	132	84.5	15.0	6.5	42.5	9	117.4	82.6	43.0	14.3	2.0	4xØ19	42/F04	M5x0.8P	
DN25	1"	25.0	165.0	166	102.0	20.5	11.5	52.0	11	124.0	89.0	50.8	15.9	2.0	4xØ19	50/F05	M6x1.0P	
DN32	1-1/4"	32.0	178.0	166	105.0	20.0	11.0	56.0	11	133.4	98.6	63.5	17.5	2.0	4xØ19	50/F05	M6x1.0P	
DN40	1-1/2"	38.0	190.0	203	125.0	23.0	15.0	65.25	14	155.5	114.3	73.2	19.1	2.0	4xØ22.3	70/F07	M8x1.25P	
DN50	2"	50.0	216.0	203	132.0	22.5	13.0	73.75	14	165.1	127.0	92.0	20.7	2.0	8xØ19	70/F07	M8x1.25P	

DIMENSION

SIZE	PORT	unit : inch																
		L	E	H	H2	H3	H4	C	ØG	ØJ	ØI	T	F	MxØN	ØK	Z		
DN15	1/2"	0.59	5.51	5.20	3.15	0.63	0.32	1.52	0.35	3.74	2.62	1.38	0.50	0.08	4xØ0.63	1.65/F04	M5x0.8P	
DN20	3/4"	0.79	6.00	5.20	3.33	0.59	0.26	1.67	0.35	4.62	3.25	1.69	0.56	0.08	4xØ0.75	1.65/F04	M5x0.8P	
DN25	1"	0.98	6.50	6.54	4.02	0.81	0.45	2.05	0.43	4.88	3.50	2.00	0.63	0.08	4xØ0.75	1.97/F05	M6x1.0P	
DN32	1-1/4"	1.26	7.01	6.54	4.13	0.79	0.43	2.20	0.43	5.25	3.88	2.50	0.69	0.08	4xØ0.75	1.97/F05	M6x1.0P	
DN40	1-1/2"	1.50	7.48	7.99	4.92	0.91	0.59	2.57	0.55	6.12	4.50	2.88	0.75	0.08	4xØ0.88	2.76/F07	M8x1.25P	
DN50	2"	1.97	8.50	7.99	5.20	0.89	0.51	2.90	0.55	6.50	5.00	3.62	0.81	0.08	4xØ0.75	2.76/F07	M8x1.25P	



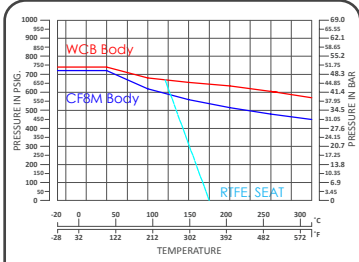
MD-32

Two Pieces Flanged Ball Valve

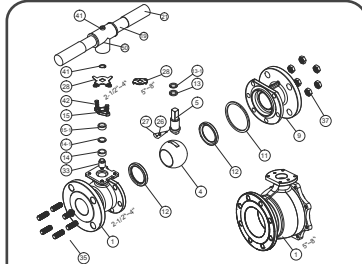
API 607 6th Edition / ISO 10497 Certified

ANSI Class 300 / Full Bore

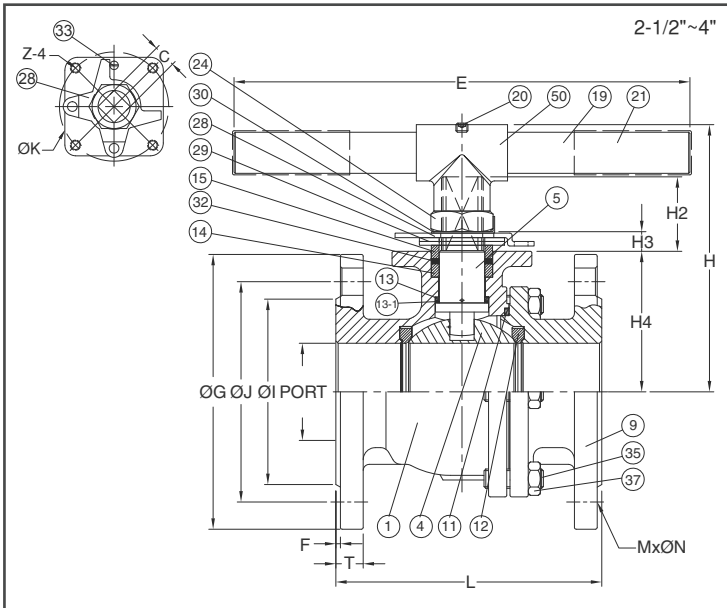
Flanged End / 1/2" ~ 6"



ANSI Class 300 P-T Chart



Explosion Drawing



FEATURES

- Investment Cast Body Construction
- 2 Pieces Body Design
- ISO 5211 Mounting Flange
- Blow-Out-Proof Stem Design
- Anti-Static Device
- Available for Pneumatic or Electric Actuator
- NACE MR0175 is available upon request
- Super Alloy materials for highly corrosive medium are available upon request

AUTOMATION AVAILABLE

SPECIFICATIONS

- Size Range: 1/2" ~ 6" (DN15 ~ DN150)
- End Connection: Flanged End, RF
- Working Pressure: CF8M - 720 PSI (CWP), WCB - 740 PSI (CWP)
- Steam Pressure: 150 PSIG. Saturated Steam for RTFE.
- Temperature Range: -4 to 356 °F (-20 to 180 °C) for RTFE.

STANDARDS

- Design: ASME/ANSI B16.34 / API 608
- Mounting Flange: ISO 5211
- Face to Face: ASME/ANSI B16.10 Class 300
- Flange Dimension: ASME/ANSI B16.5 Class 300 RF
- Material: ASTM
- Pressure Testing: API 598

CERTIFICATE

- Fire Safe: API 607 6th Edition / ISO 10497
- Fugitive Emission: TA-LUFT
- Quality Assurance: ISO 9001
- Material Certificate: EN 10204-3.1 MTR
- CE Approval: PED 97/23/EC Module H
- Canadian Certificate: CRN

MATERIAL LIST

NO.	PART NAME	MATERIAL (more options available)
1	BODY	ASTM A351 Gr.CF8M ASTM A216 Gr.WCB
4	BALL	ASTM A351 Gr.CF8M
5	STEM	ASTM A276 Gr.316
9	END CAP	ASTM A351 Gr.CF8M ASTM A216 Gr.WCB
11	BODY SEAL	GRAPHITE
12	SEAT	RTFE.(15%G.F.)
13	THRUST WASHER	GRAPHITE
13-1	THRUST WASHER	RTFE.(15%G.F.)
14	STEM PACKING	GRAPHITE
15	GLAND BUSH	SS304
19	HANDLE	STEEL
20	SET BOLT	SS304
21	HANDLE COVER	PLASTIC
24	HANDLE NUT	SS304
28	STOP PLATE	SS304
29	BELLEVILLE WASHER	SS301
30	TAB WASHER	SS304
32	PACKING FOLLOWER	RTFE.(15%G.F.)
33	STOP PIN	SS304
35	BODY BOLT	ASTM A193 Gr.B8 ASTM A193 Gr.B7
37	BOLT NUT	ASTM A194 Gr.8 ASTM A194 Gr.2H
50	HANDLE ADAPTER	ASTM A351 Gr.CF8

DIMENSION

SIZE	PORT	unit : mm																	
		L	E	H1	H2	H3	H4	C	ØG	ØJ	ØI	T	F	MxØN	ØK	Z			
DN65	2-1/2"	64.0	241	300	178.0	50.0	27.5	92.5	17	190.5	149.4	104.7	23.8	2.0	8xØ22	102/F10	M10x1.5P		
DN80	3"	76.0	283	300	188.0	50.0	27.5	101.65	17	209.6	168.1	127.0	27.0	2.0	8xØ22	102/F10	M10x1.5P		
DN100	4"	100.0	305	450	205.1	47.5	28.0	119.0	17	254.0	200.2	157.2	30.2	2.0	8xØ22	102/F10	M10x1.5P		

DIMENSION

SIZE	PORT	unit : inch																	
		L	E	H1	H2	H3	H4	C	ØG	ØJ	ØI	T	F	MxØN	ØK	Z			
DN65	2-1/2"	2.52	9.49	11.81	7.01	1.97	1.08	3.64	0.67	7.50	5.88	4.12	0.94	0.08	8xØ0.88	4.02/F10	M10x1.5P		
DN80	3"	2.99	11.14	11.81	7.40	1.97	1.08	4.00	0.67	8.25	6.62	5.00	1.06	0.08	8xØ0.88	4.02/F10	M10x1.5P		
DN100	4"	3.94	12.01	17.72	8.07	1.87	1.10	4.69	0.67	10.00	7.88	6.19	1.19	0.08	8xØ0.88	4.02/F10	M10x1.5P		



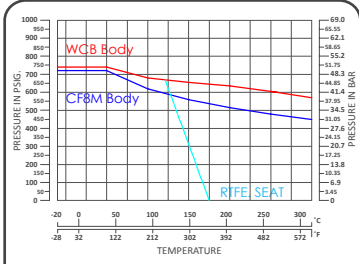
MD-32

Two Pieces Flanged Ball Valve

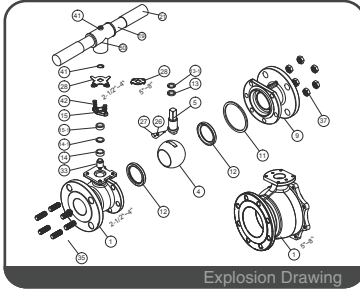
API 607 6th Edition / ISO 10497 Certified

ANSI Class 300 / Full Bore

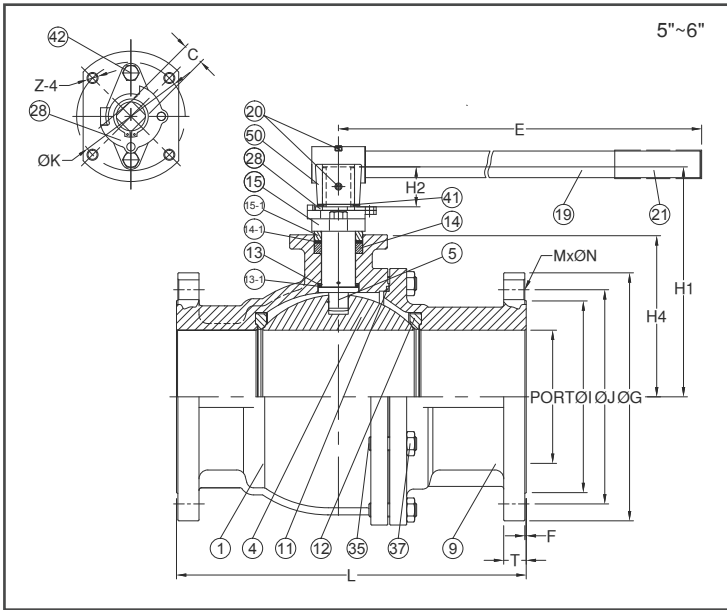
Flanged End / 1/2" ~ 6"



ANSI Class 300 P-T Chart



Explosion Drawing



5"~6"

FEATURES

- Investment Cast Body Construction
- 2 Pieces Body Design
- ISO 5211 Mounting Flange
- Blow-Out-Proof Stem Design
- Anti-Static Device
- Available for Pneumatic or Electric Actuator
- NACE MR0175 is available upon request
- Super Alloy materials for highly corrosive medium are available upon request

AUTOMATION AVAILABLE

SPECIFICATIONS

- Size Range: 1/2" ~ 6" (DN15 ~ DN150)
- End Connection: Flanged End, RF
- Working Pressure: CF8M - 720 PSI (CWP), WCB - 740 PSI (CWP)
- Steam Pressure: 150 PSIG. Saturated Steam for RTFE.
- Temperature Range: -4 to 356 °F (-20 to 180 °C) for RTFE.

STANDARDS

- Design: ASME/ANSI B16.34 / API 608
- Mounting Flange: ISO 5211
- Face to Face: ASME/ANSI B16.10 Class 300
- Flange Dimension: ASME/ANSI B16.5 Class 300 RF
- Material: ASTM
- Pressure Testing: API 598

CERTIFICATE

- Fire Safe: API 607 6th Edition / ISO 10497
- Fugitive Emission: TA-LUFT
- Quality Assurance: ISO 9001
- Material Certificate: EN 10204-3.1 MTR
- CE Approval: PED 97/23/EC Module H
- Canadian Certificate: CRN

MATERIAL LIST

NO.	PART NAME	MATERIAL (more options available)	
1	BODY	ASTM A351 Gr.CF8M	ASTM A216 Gr.WCB
4	BALL	ASTM A351 Gr.CF8M	
5	STEM	ASTM A276 Gr.316	
9	END CAP	ASTM A351 Gr.CF8M	ASTM A216 Gr.WCB
11	BODY SEAL	GRAPHITE	
12	SEAT	RTFE. (15%G.F.)	
13	THRUST WASHER	GRAPHITE	
13-1	THRUST WASHER	RTFE. (15%G.F.)	
14	STEM PACKING	GRAPHITE	
14-1	STEM PACKING	RTFE. (15%G.F.)	
15	GLAND FLANGE	ASTM A216 Gr.WCB	
15-1	GLAND BUSH	SS304	
19	HANDLE	STEEL	
20	SET BOLT	SS304	
21	HANDLE COVER	PLASTIC	
28	STOP PLATE	SS304	
35	BODY BOLT	ASTM A193 Gr.B8	ASTM A193 Gr.B7
37	BOLT NUT	ASTM A194 Gr.8	ASTM A194 Gr.2H
41	SNAP RING	SS304	
42	GLAND BOLT	SS304	
50	HANDLE ADAPTER	ASTM A351 Gr.CF8	

DIMENSION

																unit : mm		
SIZE	PORT	L	E	H1	H4	C	ØG	ØJ	ØI	T	F	M	ØN	ØK	Z			
DN125	5"	125.0	381.0	450.0	239.0	163.0	27	279.4	235.0	186.0	33.4	2.0	8	22.3	125/F12 M12x1.75P			
DN150	6"	150.0	403.0	800.0	258.5	182.5	27	317.5	269.8	216.0	35.0	2.0	12	22.3	125/F12 M12x1.75P			

DIMENSION

																unit : inch		
SIZE	PORT	L	E	H1	H4	C	ØG	ØJ	ØI	T	F	M	ØN	ØK	Z			
DN125	5"	4.92	15.00	17.72	9.41	6.42	1.06	11.00	9.25	7.32	1.31	0.08	8	0.88	4.92/F12 M12x1.75P			
DN150	6"	5.91	15.87	31.50	10.18	7.19	1.06	12.50	10.62	8.50	1.38	0.08	8	0.88	4.92/F12 M12x1.75P			