

Fig no. HPV-40FS Reduced Bore
1/4" ~ 2" DN 8- DN 50



Features :

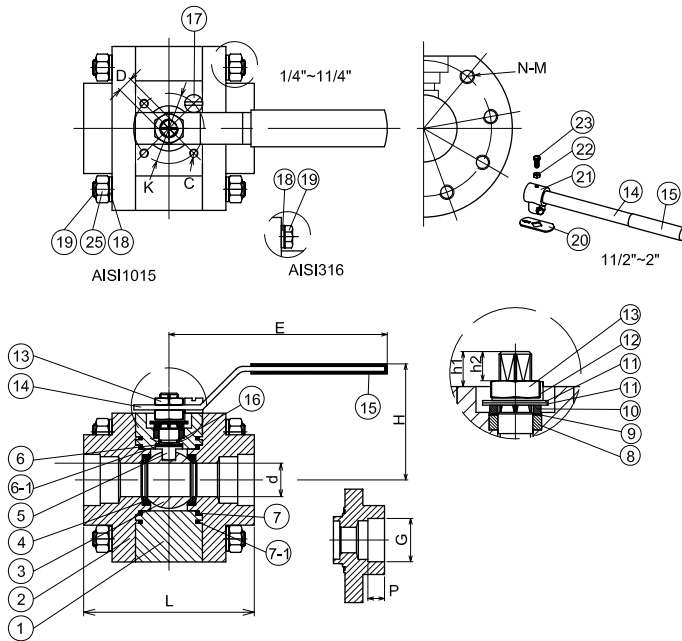
- BS 6755 PART2 API 607 5th Fire safe approved
- Bar material valve body, ISO 5211 Mounting flange
- Blow out proof stem, Anti-static design
- 360 degree rotation design, in-line maintenance
- For Chemical, Industrial application
- Carbon Steel, Super Alloy available upon request

Standard Compliance

- Body wall thickness : ASME B16.34
- Socket weld : B16.11
- Face to face : MD's standard
- Body material : ASME / ANSI
- Pressure testing : API 598
- Fire safe testing : API 607 5th, BS6755 PART 2
ISO 10497

Specification :

- End Connection : Socket weld end
- Working pressure : 246 bar (CWP)
- Temperature : -20°C to 80°C for Delrin seat
-20°C to 250°C for Peek seat



MATERIALS LIST

NO	PART NAME	MATERIAL
1	BODY	1.4401 (AISI 316)
2	CAP	1.4401 (AISI 316)
3	BALL	ASTM A351 Gr.CF8M
4	BALL SEATS	Delrin/ Peek
5	STEM	17-4PH
6	THRUST WASHER	Graphite
6-1	THRUST WASHER	PTFE
7	END SEALS	Graphite
7-1	END SEALS	PTFE
8	STEM PACKING	Graphite
9	THRUST WASHER	TFM1600
10	GLAND BUSH	S.S.304
11	BELLEVILLE WASAER	SUS304-CSP
12	STOP	S.S.304
13	HANDLE NUT	S.S.304
14	HANDLE	S.S.304
15	HANDLE SLEEVE	VINYL GRIP
16	O-RING	VITON
17	STOPPER	S.S.304
18	SPRING WASHER	S.S.304
19	BOLT	S.S.304
20	STOP PLATE	S.S.304
21	STEM ADAPTER	CF8
22	NUT	A2-70
23	BOLT	S.S.304
25	NUT	S45C

HPV -41FSAS	SIZE	d	L	E	H	H1	H2	D	K	C	N	M	G	P
mm	1/4"	9.50	85.00	151.00	61.00	10.10	7.00	9.00	36.00	M5	6.00	5/16 -18UNC	14.00	10.00
	3/8"	11.60	85.00	151.00	61.00	10.10	7.00	9.00	36.00	M5	6.00	5/16 -18UNC	17.60	10.00
	1/2"	12.50	85.00	151.00	61.00	10.10	7.00	9.00	36.00	M5	6.00	5/16 -18UNC	21.70	10.00
	3/4"	16.00	89.00	151.00	67.00	14.85	10.30	9.00	42.00	M5	8.00	5/16 -18UNC	27.30	13.00
	1"	20.00	102.00	183.00	81.00	12.00	10.00	9.00	42.00	M5	8.00	5/16 -18UNC	33.90	13.00
	1-1/4"	25.00	111.00	183.00	97.00	22.30	11.50	11.00	42.00	M5	8.00	5/16 -18UNC	42.80	13.00
	1-1/2"	32.00	119.00	285.00	113.00	33.20	17.50	14.00	50.00	M6	8.00	3/8 -16UNC	48.70	13.00
inch	2"	38.00	126.00	285.00	117.00	28.00	17.50	14.00	50.00	M6	8.00	1/2 -13UNC	61.00	16.00
	1/4"	0.37	3.35	5.94	2.40	0.40	0.28	0.35	1.42	M5	6.00	5/16 -18UNC	0.55	0.39
	3/8"	0.46	3.35	5.94	2.40	0.40	0.28	0.35	1.42	M5	6.00	5/16 -18UNC	0.69	0.39
	1/2"	0.49	3.35	5.94	2.40	0.40	0.28	0.35	1.42	M5	8.00	5/16 -18UNC	0.85	0.39
	3/4"	0.63	3.50	5.94	2.64	0.58	0.41	0.35	1.65	M5	8.00	5/16 -18UNC	1.07	0.51
	1"	0.79	4.02	7.20	3.19	0.47	0.39	0.35	1.65	M5	8.00	5/16 -18UNC	1.33	0.51
	1-1/4"	0.98	4.37	7.20	3.82	0.88	0.45	0.43	1.65	M6	8.00	3/8 -16UNC	1.69	0.51
inch	1-1/2"	1.26	4.69	11.22	4.45	1.31	0.69	0.55	1.97	M6	8.00	1/2 -13UNC	1.92	0.51
	2"	1.50	4.96	11.22	4.61	1.10	0.69	0.55	1.97	M6	8.00	9/16 -12UNC	2.40	0.63