

# API 607 Fire Safe Certified Ball Valve

## Typical Application :

Oil & Gas - Petrochemical – Chemical – Paraffin/Kerosene –  
Emergency Cut-Off - General Industrial

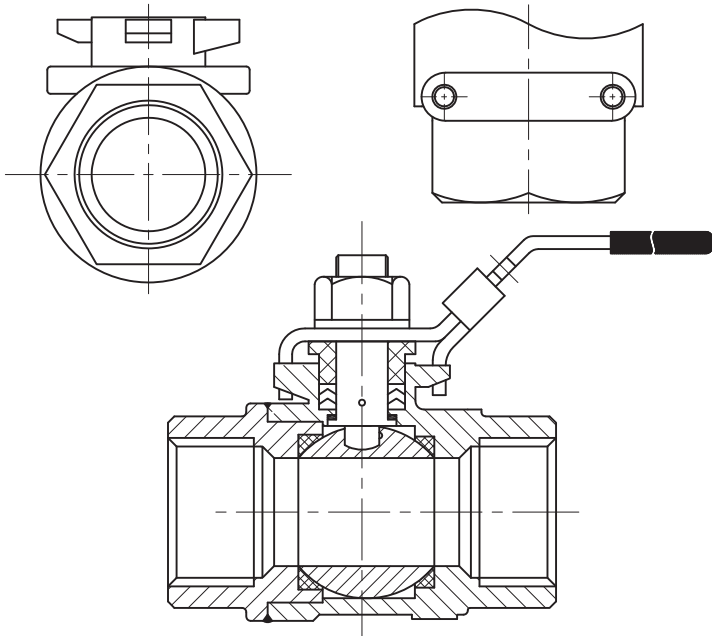


**Size : 1/4"~2"**  
**Full Bore**

- Working pressure (CWP) : 2000 psi (PN140) / 1500 psi (PN100)
- API 607 6<sup>th</sup> Edition Fire Test Certified
- Body material available including Stainless Steel and Carbon Steel
- Body and Cap are welded together
- Easy maintenance for chemical and industrial application

## V-166FS 2-PIECE FIRE SAFE CERTIFIED INVESTMENT CAST BALL VALVE

- Designed and built for economical performance with competitively priced
- Blow out proof Stem & anti-static design
- A variety of seat materials are available for choice including PTFE, RTFE (PTFE with 15% G.F.), PTFE with 50% SS316, Carbon filled PTFE, and TFM. Stem packing is die formed flexible graphite.
- Lockable handle in open and close position to prevent inadvertent operation
- Design as per ASME B16.34
- API 598 , EN12266-1 and MSS SP-55 testing and inspection
- NACE MR 0175 upon request
- End Connection: Threaded End



**MODENTIC VALVES**  
MODENTIC INDUSTRIAL CORPORATION



<http://www.ValveBus.com>



www.valvebus.com